








Remote Device
3002B-H FOUNTAIN CONTROLLER
 DMX PROFI DMX512 SOLUTIONS
 Software Version:
 SW Mk 1.0 RDM Mk 5.0

Online

Parameter Key

- Required Parameter Show
- Supported Parameter
- Manufacturer Parameter
- Custom Parameter
- PLASA Reserved Parameter

Root and Sub Devices

Device	Label
Root Device	3002B-H FOUNTAIN CONTROLLER

Supported Parameters - Root Device

PID	Parameter
\$0001	DISC_UNIQUE_BRANCH
\$0002	DISC_MUTE
\$0003	DISC_UN_MUTE
\$0015	COMMS_STATUS
\$0020	QUEUED_MESSAGE
\$0030	STATUS_MESSAGES
\$0031	STATUS_ID_DESCRIPTION
\$0050	SUPPORTED_PARAMETERS
\$0051	PARAMETER_DESCRIPTION
\$0060	DEVICE_INFO
\$0070	PRODUCT_DETAIL_ID_LIST
\$0080	DEVICE_MODEL_DESCRIPTION
\$0081	MANUFACTURER_LABEL
\$0082	DEVICE_LABEL
\$0090	FACTORY_DEFAULTS
\$00C0	SOFTWARE_VERSION_LABEL
\$00E0	DMX_PERSONALITY
\$00E1	DMX_PERSONALITY_DESCRIPTION
\$00F0	DMX_START_ADDRESS
\$0120	SLOT_INFO
\$0121	SLOT_DESCRIPTION
\$0122	DEFAULT_SLOT_VALUE
\$0141	DMX_FAIL_MODE
\$0200	SENSOR_DEFINITION
\$0201	SENSOR_VALUE
\$0340	DIMMER_INFO
\$0341	MINIMUM_LEVEL
\$0342	MAXIMUM_LEVEL
\$0343	CURVE
\$0344	CURVE_DESCRIPTION
\$0345	OUTPUT_RESPONSE_TIME
\$0346	OUTPUT_RESPONSE_TIME_DESCRIPTION
\$0347	MODULATION_FREQUENCY
\$0348	MODULATION_FREQUENCY_DESCRIPTION
\$0400	DEVICE_HOURS
\$0405	DEVICE_POWER_CYCLES
\$0640	LOCK_PIN
\$0641	LOCK_STATE
\$0642	LOCK_STATE_DESCRIPTION
\$1000	IDENTIFY_DEVICE
\$1001	RESET_DEVICE
\$1010	POWER_STATE
\$1040	IDENTIFY_MODE
\$80F0	LED_STARTADDRESS
\$80F1	DMX_HOLD MODE
\$8121	SLOT LABELS
\$8341	MIN MAX MODE
\$8440	OUTPUT POLARITY
\$FF01	RDM FACTORY SETUP
\$FF7F	RDM DIAGNOSTIC INFO

MAIN MENU

Alle RDM-Kommandos finden Sie in der RDM-Kommandoliste.

Aufgenommen mit [JESE GET/SET RDM CONTROLLER](#)

3002B-H FOUNTAIN CONTROLLER - Root Device

DMX Personality

1: A:0..10V B:RELAY 30%
1: A:0..10V B:RELAY 30%
2: 0..10V plus RELAY 1%
3: Pers.1 + LED STARTADDRESS
4: Pers.2 + LED STARTADDRESS

DMX Start Address: 001

DMX Footprint: 4

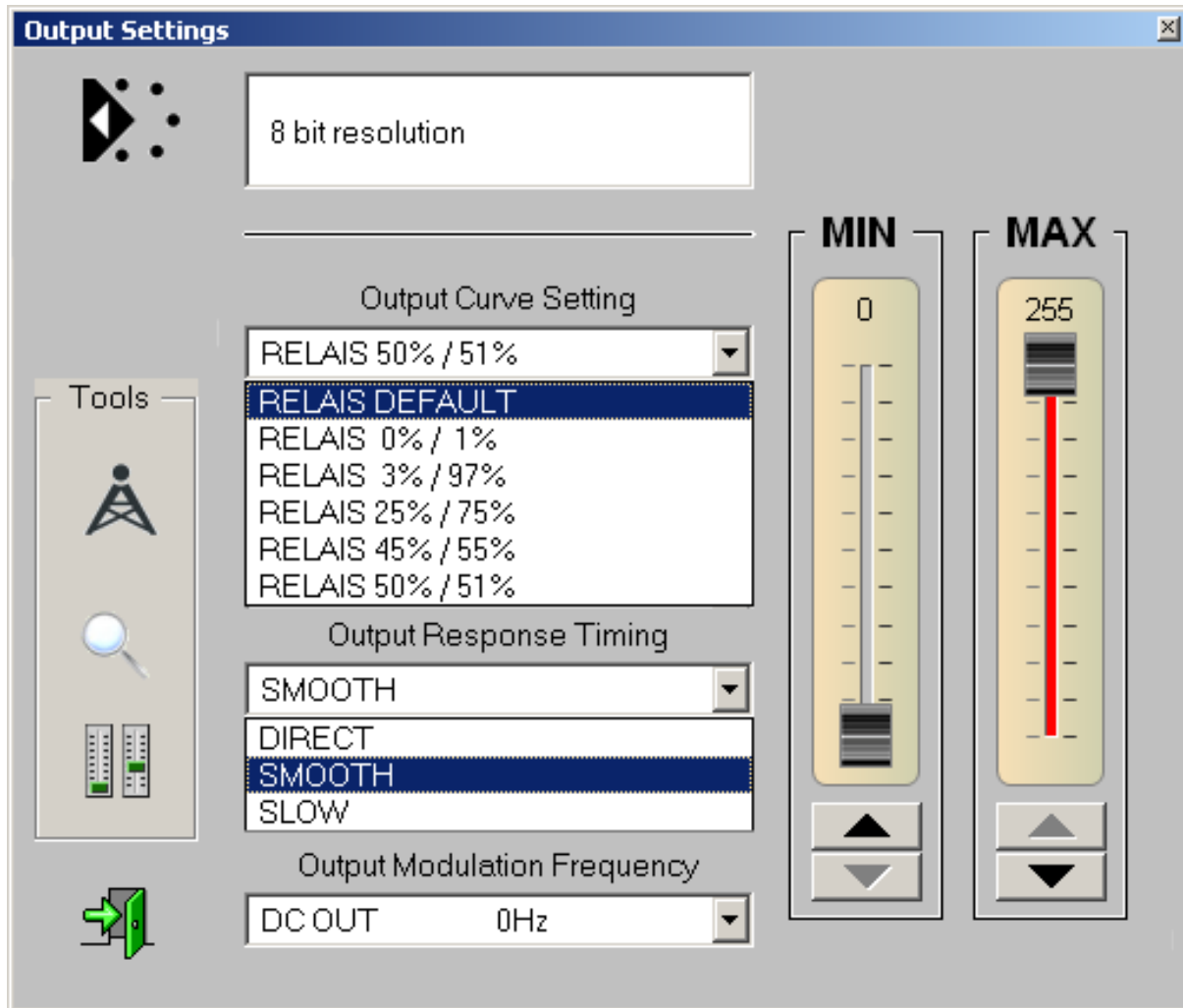
DMX Slots

001 - LEVEL 01
002 - RELAIS 02
003 - LEVEL 03
004 - RELAIS 04

DMX PERSONALITY

Es stehen 4 Personalities als 4-Kanal und als 2-Kanal Modus zur Verfügung. Dabei kann der Relaisausgang wahlweise separat, oder synchron mit Kanal 1 bzw. Kanal 2 synchronisiert werden. Die DMX Startadresse läßt sich jederzeit frei einstellen.

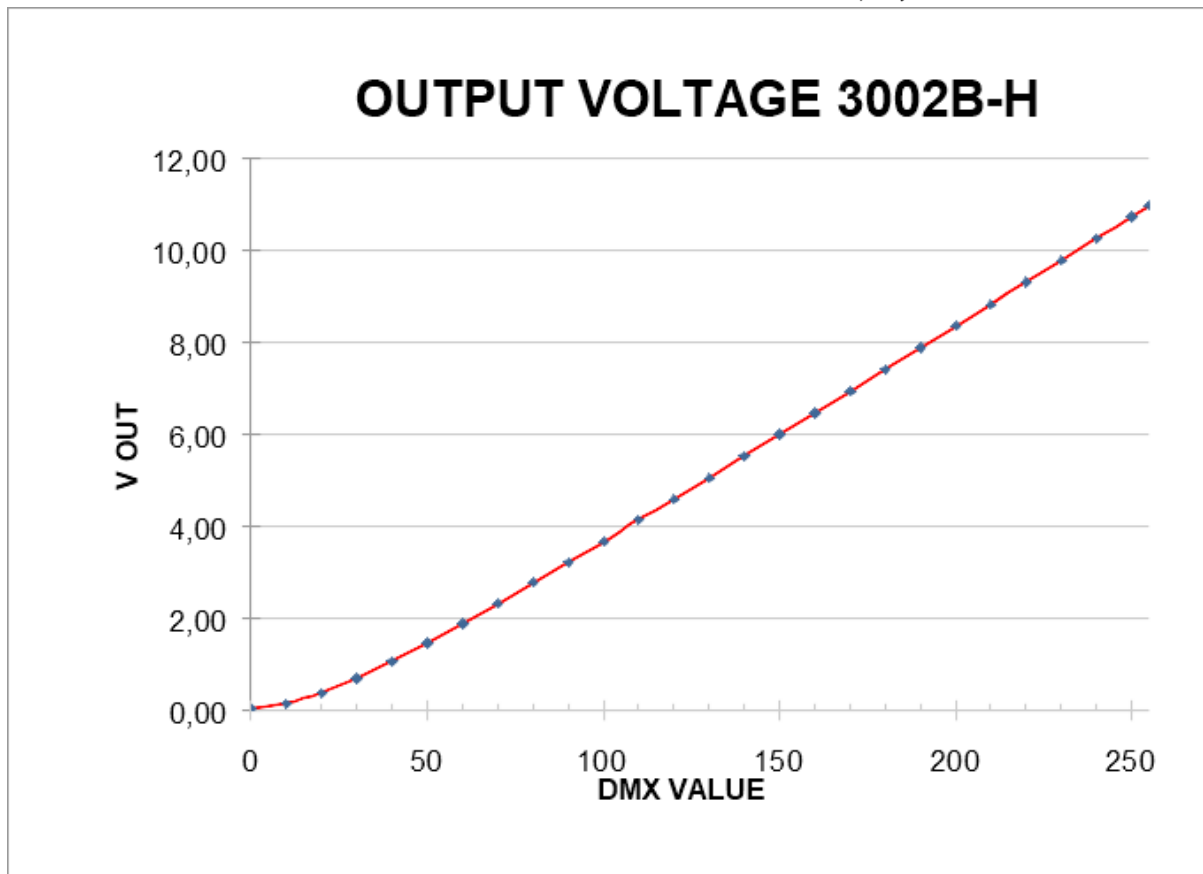
Aufgenommen mit [JESE GET/SET RDM CONTROLLER](#)



OUTPUT SETTINGS

Die Ausgabequalität des Analsignals lässt sich in drei Stufen einstellen: DIRECT (schnell), SMOOTH (geglättet) und SLOW (langsame Rampe). Der Ausgabebereich lässt sich durch einen Minimalwert und einen Maximalwert begrenzen.

Aufgenommen mit [JESE GET/SET RDM CONTROLLER](#)



AUSGANGSSPANNUNG

Der Ausgang folgt einer linearen Kurve und ist optimal zur Ansteuerung von Vorschaltgeräten, LED-Netzteilen und V/F Convertern zur Motorsteuerung geeignet. Der Ausgabebereich läßt sich über RDM durch einen Minimalwert und einen Maximalwert begrenzen.

Zwei zusätzliche USER-Kurven können selbst definiert werden.

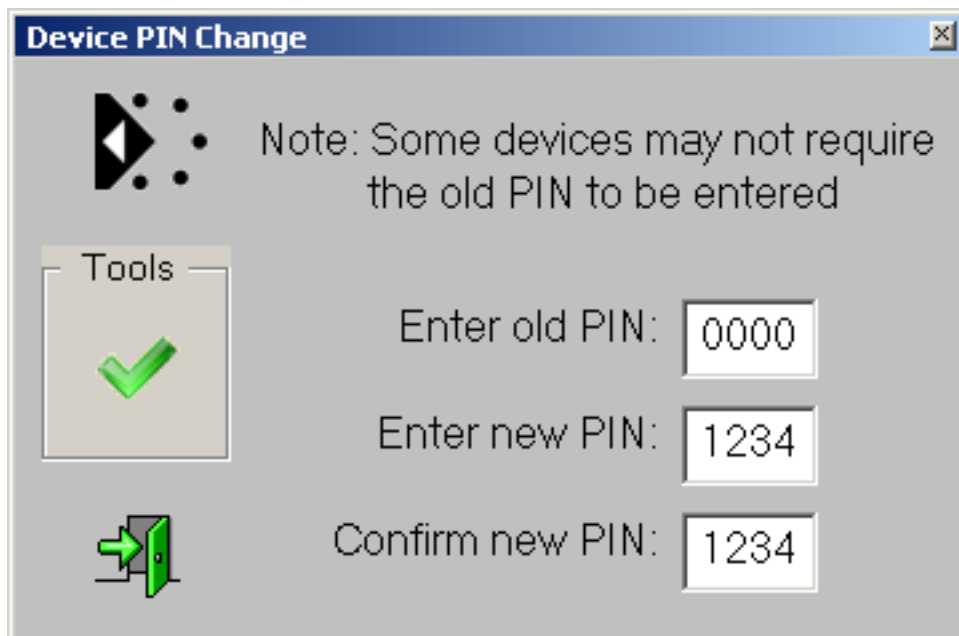
Aufgenommen mit [JESE GET/SET RDM CONTROLLER](#)



LOCK STATE

Wichtige Einstellungen lassen sich passwortgeschützt sichern.

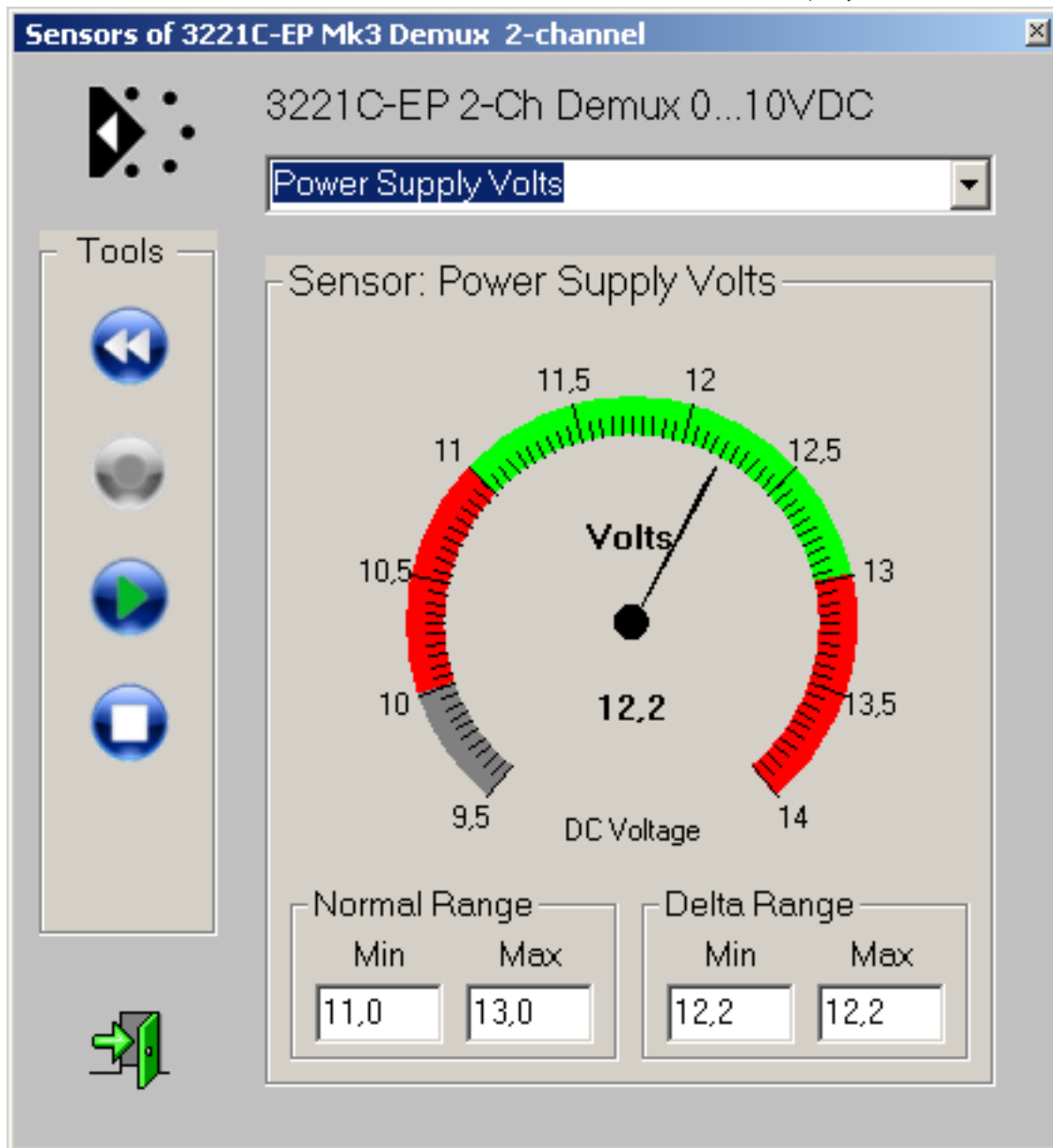
Aufgenommen mit [JESE GET/SET RDM CONTROLLER](#)



PIN CHANGE

Den PIN-Code für den Zugriff können Sie frei festlegen.

Aufgenommen mit [JESE GET/SET RDM CONTROLLER](#)



VERSORGUNGSSPANNUNG

Der Spannungssensor dient zur Überwachung der Betriebsspannung. Er verfügt gleichzeitig über die Möglichkeit des (rückstellbaren) Langzeit-Monitorings (Min/Max).

Aufgenommen mit [JESE GET/SET RDM CONTROLLER](#)

RDM Integrity ... RDM Responder Conformance Test Software ... Version 1.3.0.280

File Controllers Personalities ... Discover Factory Defaults ... Self Tests Lock Pins ... Manufacturer PIDs ... Auto Test ... Help

Build RDM packet: Project Information, DMX32 Setup, Status Collection, RDM Information

DMX Interafce: GET, SET, DISC

Running: Running, Paused, Off

Factory Defaults: Stop On, Abort, Warning, Advisory, Broadcast, Format Error, Personalities

Port ID: 0, SubDev: 0, Stop On: Failed, Checksum

Send Error: Send Error, Checksum

Repeat: Repeat, Run

Start-Up Log

Test Results

GET: RDM START ADDRESS Read back previous SET
Received a [ACK] Response Type
---- Valid Response(s):
[ACK] or [ACK_TIMER]
Start Address [0001FE, (610)]
Footprint was reported as [000004, (4)] in the Root Device Info
While the specification does not say the Start Address + Footprint cannot exceed the 612 bit limit, the recommended maximum RDM Start Address for a Response is ([612-footprint]) = [0001FE, (609)]
Current SET value [0001FE, (610)] matches the SET value [0001FE, (610)]

GET: DEVICE LABEL Read back previous SET
Received a [ACK] Response Type
---- Valid Response(s):
[ACK] or [ACK_TIMER]
Device Label [3002B-H]
Device Label contains one or more illegal 8 bit ASCII characters: [0000] starting at position 1
It is NOT recommended that 8 bit characters be used.
They might cause unpredictable behavior in the Controller.
Device Label is a complete match

Statistics

Total Run	7158
Passed	7151
Failed	0
Warnings	0
Advisories	7

Responder UID: 534C:30020000
Manufacturer ID: (534C) SOUNDLIGHT
Manufacturer Label: 3002B-H-DUAL-LEDMIX-8-RELAY
Model Description: 3002B-H-DUAL-LEDMIX-8-RELAY
SV Ver ID: [00050000, (6886356)] Personality: (1) E. Adv. Dev. BRELAY 30%

Software Version: Label SV Ver. 1.0. RDM M. 5.0

Tests Run

- (1) [00:000] DISC: DISC UN MUTE, Network Broadcast FFFF FFFFFFFF
- (2) [00:016] DISC: DISC UNIQUE BRANCH (Root)
- (3) [00:032] DISC: DISC UNIQUE BRANCH (Root)
- (4) [00:048] DISC: DISC UNIQUE BRANCH (Root)
- (5) [00:064] DISC: DISC UN MUTE, Manufacturer Broadcast 534C:FFFFFFF
- (6) [00:080] DISC: DISC UN MUTE, Manufacturer Broadcast 534C:FFFFFFF
- (7) [00:096] DISC: DISC UN MUTE, Manufacturer Broadcast 534C:FFFFFFF
- (8) [00:112] DISC: DISC UN MUTE, Manufacturer Broadcast 534C:FFFFFFF
- (9) [00:128] DISC: DISC UN MUTE, Manufacturer Broadcast 534C:FFFFFFF
- (10) [00:144] DISC: DISC UN MUTE, Manufacturer Broadcast 534C:FFFFFFF
- (11) [00:160] DISC: DISC UN MUTE, Manufacturer Broadcast 534C:FFFFFFF
- (12) [00:176] DISC: DISC UN MUTE, Manufacturer Broadcast 534C:FFFFFFF
- (13) [00:192] DISC: DISC UN MUTE, Manufacturer Broadcast 534C:FFFFFFF
- (14) [00:208] DISC: DISC UN MUTE, Manufacturer Broadcast 534C:FFFFFFF
- (15) [00:224] DISC: DISC UN MUTE, Manufacturer Broadcast 534C:FFFFFFF
- (16) [00:240] DISC: DISC UN MUTE, Manufacturer Broadcast 534C:FFFFFFF
- (17) [00:256] DISC: DISC UN MUTE, Manufacturer Broadcast 534C:FFFFFFF
- (18) [00:272] DISC: DISC UN MUTE, Manufacturer Broadcast 534C:FFFFFFF
- (19) [00:288] DISC: DISC UN MUTE, Manufacturer Broadcast 534C:FFFFFFF
- (20) [00:304] DISC: DISC UN MUTE, Manufacturer Broadcast 534C:FFFFFFF
- (21) [00:320] DISC: DISC UN MUTE, Manufacturer Broadcast 534C:FFFFFFF
- (22) [00:336] DISC: DISC UN MUTE, Manufacturer Broadcast 534C:FFFFFFF
- (23) [00:352] DISC: DISC UN MUTE, Manufacturer Broadcast 534C:FFFFFFF
- (24) [00:368] DISC: DISC UN MUTE, Manufacturer Broadcast 534C:FFFFFFF
- (25) [00:384] DISC: DISC UN MUTE, Manufacturer Broadcast 534C:FFFFFFF
- (26) [00:400] DISC: DISC UN MUTE, Manufacturer Broadcast 534C:FFFFFFF
- (27) [00:416] DISC: DISC UN MUTE, Manufacturer Broadcast 534C:FFFFFFF
- (28) [00:432] DISC: DISC UN MUTE, Manufacturer Broadcast 534C:FFFFFFF
- (29) [00:448] DISC: DISC UN MUTE, Manufacturer Broadcast 534C:FFFFFFF
- (30) [00:464] DISC: DISC UN MUTE, Manufacturer Broadcast 534C:FFFFFFF
- (31) [00:480] DISC: DISC UN MUTE, Manufacturer Broadcast 534C:FFFFFFF
- (32) [00:496] DISC: DISC UN MUTE, Manufacturer Broadcast 534C:FFFFFFF
- (33) [00:512] DISC: DISC UN MUTE, Manufacturer Broadcast 534C:FFFFFFF
- (34) [00:528] DISC: DISC UN MUTE, Manufacturer Broadcast 534C:FFFFFFF
- (35) [00:544] DISC: DISC UN MUTE, Manufacturer Broadcast 534C:FFFFFFF
- (36) [00:560] DISC: DISC UN MUTE, Manufacturer Broadcast 534C:FFFFFFF
- (37) [00:576] DISC: DISC UN MUTE, Manufacturer Broadcast 534C:FFFFFFF

RDM INTEGRITY TEST

Der RDM Integrity Test Report erzeugt fehlerhafte Kommandos und unmögliche Daten: auch hier ist die 3002B-H absolut RDM kompatibel.

Als europäisches Produkt unterstützt unser Decoder natürlich auch internationale Sonderzeichen in Labeln.

Aufgenommen mit RDM Conformance Responder Test