

RDM FEATURES 3603PWM-H

Mehr Informationen über DMX RDM erhalten Sie auf unserer Website www.soundlight.eu/rdm, auf der Sie auch eine Erläuterung der SOUNDLIGHT-spezifischen RDM Kommandos finden können. Die aktuelle Version der 3603PWM-H ist DMX RDM kompatibel. Damit stehen Ihnen zahlreiche Möglichkeiten zur Verfügung, das Interface zu konfigurieren und zu administrieren. RDM-Geräte sind durchaus drahtlos einsetzbar - etwa auf einer Gebäudefassade, die drahtlos gesteuert werden soll. Hier sehen Sie den Startbildschirm der DMX RDM-Erkennung über eine DMX Funkstrecke.

1. MAIN MENU

Alle RDM-Kommandos finden Sie in der RDM-Kommandoliste.

Aufgenommen mit [JESE GET/SET RDM CONTROLLER](#)

Device: 53 4C : 36 03 00 01

Remote Device
SOUNDLIGHT The DMX Company
3603PWM CA CV DRIVER Interface
Software Version:
SW Mk 1.5 RDM Mk 2.5

Parameter Key
 Show
Required Parameter
Supported Parameter
Manufacturer Parameter
ESTA Reserved Parameter

Tools
DMX 001

Root and Sub Devices

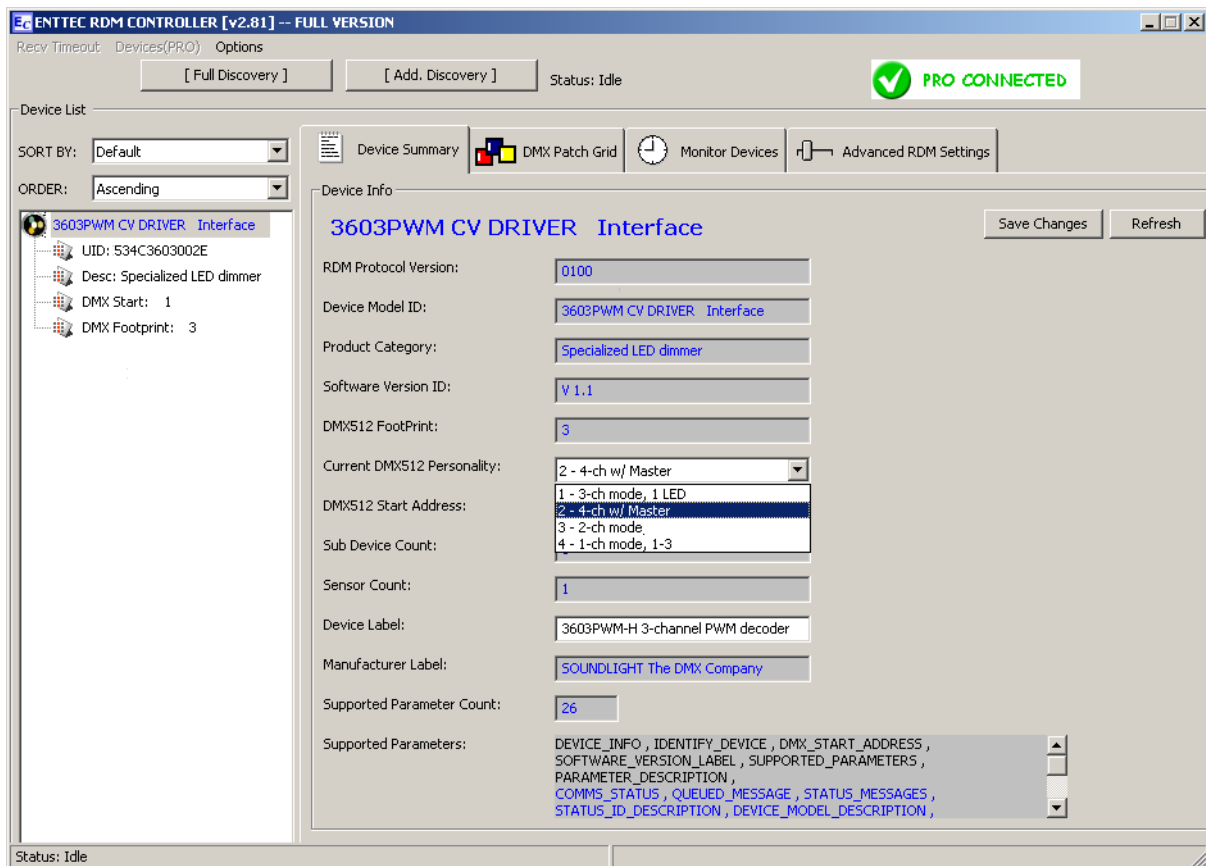
Device	Label
Root Device	3603PWM-H 3-channel PWM Decoder

Supported Parameters

PID	Parameter
\$0001	DISC_UNIQUE_BRANCH
\$0002	DISC_MUTE
\$0003	DISC_UN_MUTE
\$0015	COMMS_STATUS
\$0020	QUEUED_MESSAGE
\$0030	STATUS_MESSAGES
\$0031	STATUS_ID_DESCRIPTION
\$0050	SUPPORTED_PARAMETERS
\$0051	PARAMETER_DESCRIPTION
\$0060	DEVICE_INFO
\$0070	PRODUCT_DETAIL_ID_LIST
\$0080	DEVICE_MODEL_DESCRIPTION
\$0081	MANUFACTURER_LABEL
\$0082	DEVICE_LABEL
\$0090	FACTORY_DEFAULTS
\$00C0	SOFTWARE_VERSION_LABEL
\$00E0	DMX_PERSONALITY
\$00E1	DMX_PERSONALITY_DESCRIPTION
\$00F0	DMX_START_ADDRESS
\$0120	SLOT_INFO
\$0121	SLOT_DESCRIPTION
\$0122	DEFAULT_SLOT_VALUE
\$0200	SENSOR_DEFINITION
\$0201	SENSOR_VALUE
\$0400	DEVICE_HOURS
\$0405	DEVICE_POWER_CYCLES
\$0501	DISPLAY_LEVEL
\$1000	IDENTIFY_DEVICE
\$1001	RESET_DEVICE
\$1010	POWER_STATE
\$80F1	DMX HOLD MODE
\$8301	DMX FAILMODE
\$8330	PIN SETTING
\$8331	LOCK STATE
\$8332	LOCK STATE DESCRIPT.
\$8340	IDENTIFY MODE
\$FF01	RDM FACTORY SETUP

2. MAIN MENU

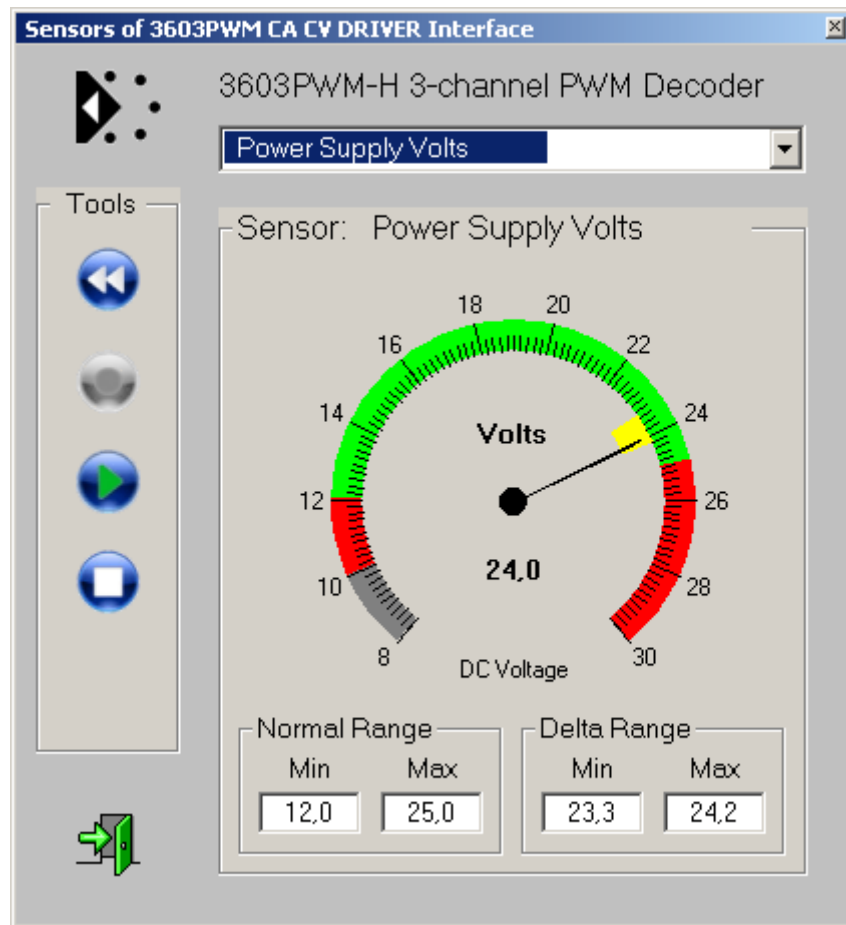
Startadresse und DMX Personality sowie alle Gerätekennungen finden sich im Hauptmenü .
Aufgenommen mit ENTTEC RDM CONTROLLER



3. VERSORGUNGSSPANNUNG

Der Spannungssensor dient zur Überwachung der Betriebsspannung. Er verfügt gleichzeitig über die Möglichkeit des (rückstellbaren) Langzeit-Monitorings (Min/Max).

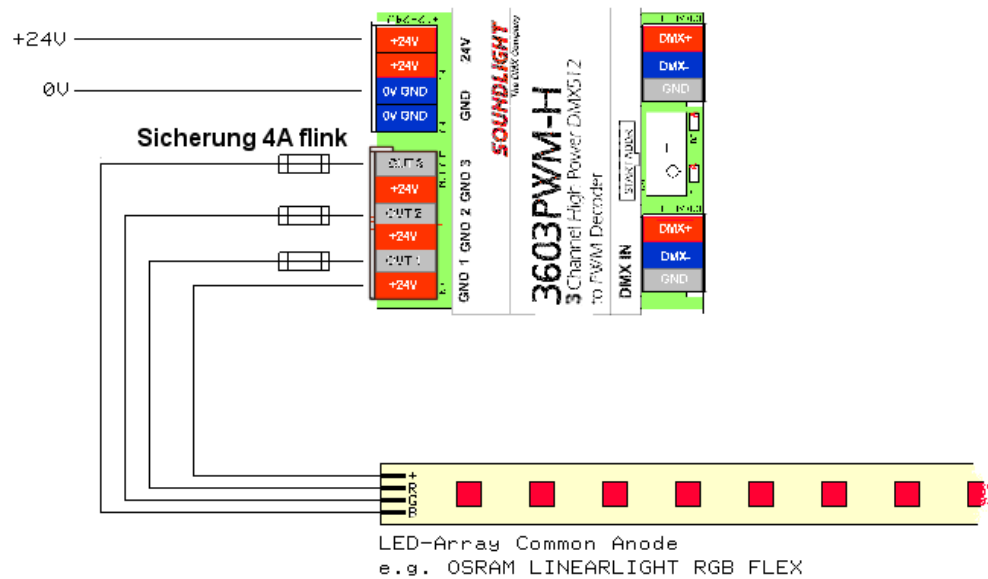
Aufgenommen mit JESE GET/SET RDM CONTROLLER



4. VERSORGUNGSSPANNUNG

Der Spannungssensor dient zur Überwachung der Betriebsspannung. Er verfügt gleichzeitig über die Möglichkeit des (rückstellbaren) Langzeit-Monitorings (Min/Max).

Aufgenommen mit [JESE GET/SET RDM CONTROLLER](#)



5. VERDRAHTUNGSSCHEMA

Die Anschaltung von LEDs zeigt die nebenstehende Darstellung. Es können spannungsgesteuerte LEDs angeschlossen werden, wobei die Betriebsspannung der LED-Spannung entsprechen sollte. Geeignet sind alle handelsüblichen LED-Assemblies mit gemeinsamer Anode und 12V oder 24V Betriebsspannung.

OLA RDM Responder Tests

RDM Responder Tests

Test results for: **534c:360303dd**, generated in 611 seconds.

Broken	Failed	Not Run	Passed	Total
0	0	2	233	235

Results By Category


• Configuration	9 / 9 (100%)
• Control	20 / 20 (100%)
• Core Functionality	4 / 4 (100%)
• DMX512 Setup	13 / 13 (100%)
• Dimmer Settings	1 / 1 (100%)
• Display Settings	4 / 4 (100%)
• Error Conditions	110 / 110 (100%)
• Network Management	25 / 25 (100%)
• Power / Lamp Settings	15 / 15 (100%)
• Product Information	19 / 19 (100%)
• RDM Information	1 / 1 (100%)
• Sensors	8 / 8 (100%)
• Status Collection	3 / 3 (100%)
• Sub Devices	1 / 1 (100%)

6. RDM TEST REPORT


Der OLA RDM Test Report zeigt: die 3603PWM-H ist 100% RDM kompatibel.

Betriebsstunden-Zähler und Reset-Counter sind bei unseren Interfaces nicht rückstellbar.

Aufgenommen mit [OLA RDM Responder Test](#)



www.dmxrdbl.com



www.bosch-electric.com

RDM Integrity
DMX Responder Performance Test Software - Version 1.3.0.240

File Controllers Responders Personalities Net-View Statistics | Timing | Discovery
Restore Factory Defaults Self Tests Manufacturer PIDs Log PIDs Reset Ignore AutoTest AckOverflow | Help

DMX Interleave

Off Running Custom

All 0's All 1's All 0x55

Build RDM Packet

Command Class: GET SET DISC

Det UID:

PID: PDL:

Port ID: SubDevice:

Factory Defaults: Root SubDevice Broadcast FormatError Un#

Stress Tests: Search for SDs Illegal CmdCode Port ID = 1 Broadcast CheckSum Sub-Start Code

Stop On: Failed Warning Advisory Timing Error FormatError Un#

Single Step Run Repeat

Test Results

GET: DEVICE LABEL, Read back previous SET
ADVISORY
Response Type of [ACK] received
Device Label: [NON Print chaz]

```

(1) [00,000] DISC: DISC UN MUTE, Network Broadcast FFFF:FFFFFFFF
(2) [00,040] DISC: DISC UN MUTE, Network Broadcast FFFF:FFFFFFFF
(3) [00,072] DISC: DISC UN MUTE, Network Broadcast FFFF:FFFFFFFF
(4) [00,104] DISC: DISC UNIQUE BRANCH [Root]
(5) [00,138] DISC: DISC MUTE, Network Broadcast FFFF:FFFFFFFF
(6) [00,186] DISC: DISC UNIQUE BRANCH [Root]
(7) [00,218] DISC: DISC UN MUTE, Manufacturer Broadcast 634C:FFFFFFFF
(8) [00,267] DISC: DISC UNIQUE BRANCH [Root]
(9) [00,299] DISC: DISC MUTE, Manufacturer Broadcast 634C:FFFFFFFF
(10) [00,348] DISC: DISC UNIQUE BRANCH [Root]
(11) [00,380] DISC: DISC UN MUTE, 534C:3603000
(12) [00,412] DISC: DISC UNIQUE BRANCH [Root]
(13) [00,461] DISC: DISC MUTE, 534C:3603000
(14) [00,493] DISC: DISC UNIQUE BRANCH [Root]
(15) [00,542] GET: PROXIED DEVICE COUNT
(16) [00,584] SET: PROXIED DEVICE COUNT
(17) [00,631] GET: PROXIED DEVICES
(18) [00,681] SET: PROXIED DEVICES
(19) [00,723] GET: SUPPORTED PARAMETERS
(20) [00,760] SET: SUPPORTED PARAMETERS
(21) [00,834] GET: PARAMETER DESCRIPTION [0x8341]
(22) [00,893] SET: PARAMETER DESCRIPTION [0x8341]
(23) [00,945] GET: PARAMETER DESCRIPTION [0x8F0E]
(24) [01,005] SET: PARAMETER DESCRIPTION [0x8F0E]
(25) [01,051] GET: PARAMETER DESCRIPTION [0x8F0F]
(26) [01,117] SET: PARAMETER DESCRIPTION [0x8F0F]
(27) [01,179] GET: PARAMETER DESCRIPTION [0x8F0F]
(28) [01,237] SET: PARAMETER DESCRIPTION [0x8F0F]
(29) [01,304] GET: PARAMETER DESCRIPTION [0x80E2]
(30) [01,360] SET: PARAMETER DESCRIPTION [0x80E2]
(31) [01,448] GET: PARAMETER DESCRIPTION [0x80F1]
(32) [01,505] SET: PARAMETER DESCRIPTION [0x80F1]
(33) [01,567] GET: PARAMETER DESCRIPTION [0x81D1]
(34) [01,633] SET: PARAMETER DESCRIPTION [0x81D1]
(35) [01,711] GET: DEVICE INFO
(36) [01,789] SET: DEVICE INFO
(37) [01,859] GET: Response: DEVICE INFO Invalid CC [SET+1]
                    
```

Statistics

Total Run	328
Passed	327
Failed	0
Warnings	0
Advisories	1
Timing	0

Responder UID 534C:3603000
SW Ver: ID: 67699463 (0x04090307)
Personality: (1) 3-ch mode, 1LED

7. RDM INTEGRITY TEST REPORT

Das Verhalten bei allen denkbaren DMX RDM Kommandos zeigt der RDM Integrity Test. Auch hier zeigt sich: keine Fehler! SOUNDLIGHT Decoder sind absolut Norm-kompatibel und immun gegen Daten- und Formatfehler.

Aufgenommen mit RDM Integrity Test Software

Anders als US-Produkte verarbeiten unsere Decoder auch ASCII-Sonderzeichen (ä,ö,ü etc.), daher gibt der Testbericht einen Hinweis.

DMX RDM
www.digitlight.com

E1.20 and E1.21 Tests to Perform

All Categories

Product Information

Power/Lamp Settings

Network Management

Network Management

Status Collection

RDM Information

RDM Information

Dimmer Settings

Control

Build RDM Packet

Command Class: GET SET DISC

Parameter ID:

Port ID:

Subdevice:

Repeat:

Run

Stress Tests

Search for SDs

SubDevices

Sensors

Broadcast

Sub-Start Code

Failed

Warning

Advisory

Format Error

LnF

Run

Tests Run

Show Timestamp [hh:mm:ss.mscc]

All Selected

- (1) 00:00:00 DISC UN MUTE, Network Broadcast FFFF.FFFFFFFF
- (2) 00:00:00 DISC UN MUTE, Network Broadcast FFFF.FFFFFFFF
- (3) 00:13:00 DISC UN MUTE, Network Broadcast FFFF.FFFFFFFF
- (4) 00:17:41 DISC UN MUTE, Manufacturer Broadcast 534C.FFFFFFFF
- (5) 00:24:09 DISC UN MUTE, Manufacturer Broadcast 534C.FFFFFFFF
- (6) 00:27:21 DISC UN MUTE, Manufacturer Broadcast 534C.FFFFFFFF
- (7) 00:36:71 DISC UN MUTE, Manufacturer Broadcast 534C.FFFFFFFF
- (8) 00:40:11 DISC UN MUTE, Manufacturer Broadcast 534C.FFFFFFFF
- (9) 00:58:51 DISC UN MUTE, Manufacturer Broadcast 534C.FFFFFFFF
- (10) 00:58:51 DISC UN MUTE, Manufacturer Broadcast 534C.FFFFFFFF
- (11) 00:58:51 DISC UN MUTE, Manufacturer Broadcast 534C.FFFFFFFF
- (12) 00:58:51 DISC UN MUTE, Manufacturer Broadcast 534C.FFFFFFFF
- (13) 00:58:51 DISC UN MUTE, Manufacturer Broadcast 534C.FFFFFFFF
- (14) 00:58:51 DISC UN MUTE, Manufacturer Broadcast 534C.FFFFFFFF
- (15) 00:58:51 DISC UN MUTE, Manufacturer Broadcast 534C.FFFFFFFF
- (16) 00:58:51 DISC UN MUTE, Manufacturer Broadcast 534C.FFFFFFFF
- (17) 00:58:51 DISC UN MUTE, Manufacturer Broadcast 534C.FFFFFFFF
- (18) 00:58:51 DISC UN MUTE, Manufacturer Broadcast 534C.FFFFFFFF
- (19) 00:58:51 DISC UN MUTE, Manufacturer Broadcast 534C.FFFFFFFF
- (20) 00:58:51 DISC UN MUTE, Manufacturer Broadcast 534C.FFFFFFFF
- (21) 00:58:51 DISC UN MUTE, Manufacturer Broadcast 534C.FFFFFFFF
- (22) 00:58:51 DISC UN MUTE, Manufacturer Broadcast 534C.FFFFFFFF
- (23) 00:58:51 DISC UN MUTE, Manufacturer Broadcast 534C.FFFFFFFF
- (24) 00:58:51 DISC UN MUTE, Manufacturer Broadcast 534C.FFFFFFFF
- (25) 00:58:51 DISC UN MUTE, Manufacturer Broadcast 534C.FFFFFFFF
- (26) 00:58:51 DISC UN MUTE, Manufacturer Broadcast 534C.FFFFFFFF
- (27) 00:58:51 DISC UN MUTE, Manufacturer Broadcast 534C.FFFFFFFF
- (28) 00:58:51 DISC UN MUTE, Manufacturer Broadcast 534C.FFFFFFFF
- (29) 00:58:51 DISC UN MUTE, Manufacturer Broadcast 534C.FFFFFFFF
- (30) 00:58:51 DISC UN MUTE, Manufacturer Broadcast 534C.FFFFFFFF
- (31) 00:58:51 DISC UN MUTE, Manufacturer Broadcast 534C.FFFFFFFF
- (32) 00:58:51 DISC UN MUTE, Manufacturer Broadcast 534C.FFFFFFFF
- (33) 00:58:51 DISC UN MUTE, Manufacturer Broadcast 534C.FFFFFFFF
- (34) 00:58:51 DISC UN MUTE, Manufacturer Broadcast 534C.FFFFFFFF
- (35) 00:58:51 DISC UN MUTE, Manufacturer Broadcast 534C.FFFFFFFF
- (36) 00:58:51 DISC UN MUTE, Manufacturer Broadcast 534C.FFFFFFFF
- (37) 00:58:51 DISC UN MUTE, Manufacturer Broadcast 534C.FFFFFFFF

Test Results

GET: DEVICE LABEL Read back previous SET

ADVISORY

Response Type of [ACK] received

Device Label [NON Print char]

Device Label appears to have Substituted Printable Characters for the Non-Printable Characters

This is not recommended, although not prohibited

SET: DEVICE LABEL Data Error with 8 Bit characters [AABbCcDd]

ADVISORY

Response Type [ACK] NOT Expected

SET: DEVICE LABEL contained one or more illegal 8 bit ASCII characters

Refer to E1.20 section 10.1., ISO/IEC 646

---- Valid Response(s) :
[NACK] with NR of [Data Out Of Range]

GET: DEVICE LABEL Read back previous SET

ADVISORY

Response Type of [ACK] received

Device Label [AABbCcDd]

DEVICE LABEL contains one or more illegal 8 bit ASCII characters: [0x00] starting at position 1

It is NOT recommended that 8 bit characters be used.

They might cause display issues in the Controller.

Refer to E1.20 section 10.1., ISO/IEC 646

Device Label is a complete match

Statistics

Total Run	6043
Passed	6040
Failed	0
Warnings	0
Advisories	3

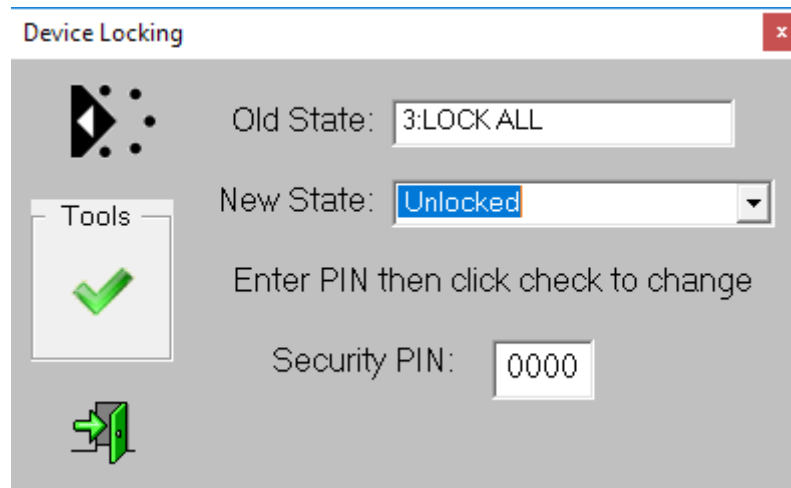
Startup Log

8. RDM INTEGRITY TEST REPORT

Das Verhalten bei fehlerhaften, falsch formatierten oder unzulässigen Kommandos (über 6000 Tests!) zeigt der RDM Integrity Stress-Test. Auch hier zeigt sich: keine Fehler! SOUNDLIGHT Decoder sind absolut Norm-kompatibel und immun gegen Daten- und Formatfehler.

Aufgenommen mit RDM Integrity Test Software

Anders als US-Produkte verarbeiten unsere Decoder auch ASCII-Sonderzeichen (ä,ö,ü etc.). Daher gibt der Testbericht entsprechende Hinweise.



WICHTIGER HINWEIS

The 3603PWM-H is a RDM compatible decoder, which supports the RDM LOCK command to prevent access to the configuration memory for safety reasons. When completely locked, only the start address of the decoder can be modified.

Unfortunately, some locked devices have been shipped. They can easily be unlocked using a suitable RDM Controller. Select the "LOCK STATE" command and change the setting to "unlocked". The default password is "0000".

Please refer to our RDM Info Page for examples using other controllers.