

OPERATING MANUAL

DMX / PWM Dekoder 3604PWM-H Mk1 RDM



(C) SOUNDLIGHT 1996-2013 * ALL RIGHTS RESERVED * NO PART OF THIS MANUAL MAY BE REPRODUCED, DUPLICATED OR USED COMMERCIALY WITHOUT THE PRIOR WRITTEN CONSENT OF THE OWNER * ALL STATEMENTS WITHIN THIS MANUAL HAVE BEEN CHECKED CAREFULLY AND ARE BELIEVED TO BE ACCURATE, HOWEVER SOUNDLIGHT DOES NOT ASSUME ANY RESPONSIBILITY FOR ERRORS OR OMISSIONS. * THE USER HAS TO CHECK THE SUITABILITY OF THE EQUIPMENT FOR THE INTENDED USE. SOUNDLIGHT EXPRESSLY EXCLUDES ANY RESPONSIBILITY FOR DAMAGES - DIRECTOR INDIRECT - WHICH MAY OCCUR DUE TO MISUSE, UNPROPER INSTALLATION, WRONG OPERATING CONDITIONS AND NON-COMPLIANCE TO THE INSTRUMENT'S INSTRUCTIONS, AS WELL AS IGNORANCE OF EXISTING SAFETY REGULATIONS.

Thank you for choosing a SOUNDLIGHT device.

The SOUNDLIGHT DMX PWM Converter 3604PWM is an intelligent converter accepting drive signals according to USITT DMX-512/1990, DIN 56930-2, ANSI E1-11 DMX512A and ANSI E1-20 DMX RDM. The DMX signal is converted to a PWM output signal to drive low voltage incandescent lamps, proportional valves or voltage driven LED arrays. 4 individual outputs are driven by 4 DMX addresses. The interface can be used with all standard light control systems. Its special advantages include:

- **universal protocol decoding**
Recognizes all variants of the protocol as defined by USITT / ESTA / ANSI/DIN
- **future-proof**
The unit is software controlled and can easily be adapted to any change in protocol definition.
- **high linearity**
As the unit accepts and outputs data in digital format, excellent linearity characteristics result.
- **simple supply**
The power supply is 12...24V DC
- **signal loss**
In the case of a loss of the drive signal the last setting will remain intact.
- **cost-effective**
The SOUNDLIGHT 3604PWM-H is a cost-effective solution for many purposes.

APPLICATIONS

The converter 3604PWM-H is intended for all control applications to drive voltage controlled loads, e.g. low voltage incandescent lamps, proportional valves or constant-voltage driven LEDs. Each output can be loaded with 24V / 3A or 75W@24VDC, respectively (maximum rated values). The unit is well suited for all applications on stage, for TV background lighting, or for architectural lighting purposes. The dimming range is 0% to 100%.

The 3604PWM is best suited to drive OSRAM LINEARLIGHT FLEX LED tapes..

UNPACKING

Please unpack carefully and check that all items are intact. When leaving our factory, the card has been in good condition. In case of damage during transport please notify the carrier immediately.

When unpacking, you should identify these items:

- * the interface 3604PWM-H
- * this manual

You may need a start address board 3000P, 3003P or 3005P or a RDM controller for start address and personality settings. These devices are optional and must be purchased separately.

CONNECTORS

The decoder 3604PWM-H comprises of these connectors:

CN1 POWER SUPPLY 12-24VDC

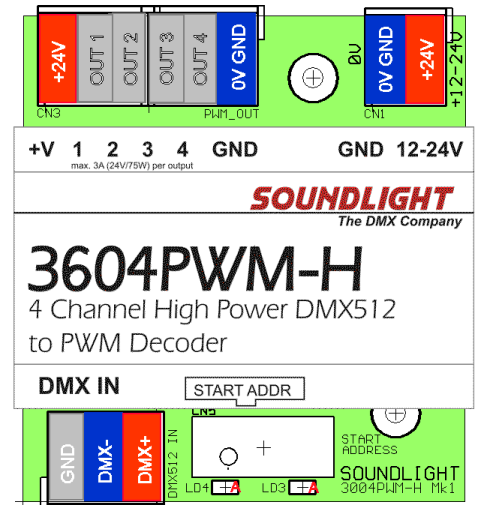
red +12V DC...+24V DC
blue 0 V DC (GND)

CN2 DMX Data Input / Output

1 grey GND, Screen
2 blue DMX Drive Signal -
3 orange DMX Drive Signal +

CN3 PWM OUTPUT

1 orange + 12...24V DC, COMMON ANODE
2 grey OUTPUT 1: CATHODE, switches to GND
3 grey OUTPUT 2: CATHODE, switches to GND
4 grey OUTPUT 3: CATHODE, switches to GND
5 grey OUTPUT 4: CATHODE, switches to GND
6 blue GND, 0V



Refer to the drawing for the location of the connectors. To open clamp, press lever. Insert wire, then release lever.

SIGNAL INDICATORS

Status signalling is with LED indicators:

green: DMX data reception OK
red: ERROR
normally off
blinks at transmission errors or at loss of signal

Red and green LEDs blink alternatively four times ("programming cycle") when programming data into the 3604PWM-H (e.g. start address, HOLD mode, change of DMX personality). No action will be taken when start address setting has been locked from within RDM. See next chapter how to re-enable locked address and DIP switches.

DMX START ADDRESS

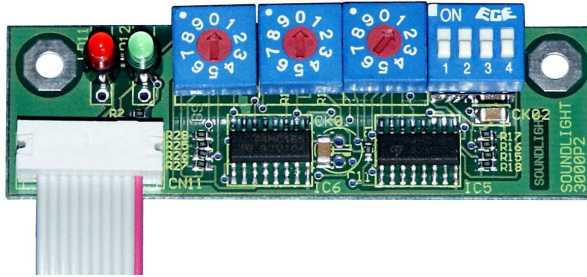
Start address setting can be performed via DMX RDM, using any compliant DMX RDM controller, or a start address board 3000P (switches), 3003P (LED display) or 3005P (LCD display).

Gently connect the start address board. To program a DMX start address, simply set the desired start address. Wait some seconds until the unit recognizes and programs the address setting. The programming cycle will be indicated by the the red and green LED flashing alternatively four times.

IMPORTANT NOTICE:

When programming a DMX start address, changing the DMX personality, the HOLD mode or other properties **via RDM access**, the external address switches are getting *disabled*. To re-enable the DMX start address switches, temporarily set any address from 900 ... 999 (simply set the "hundreds" selector to "9"). This will re-enable the address switches and override RDM settings.

DIP-SWITCHES



The DMX personality (mode of operation) and the output behaviour is set using the four DIP-switches of the start address board 3000P (or functions F1...F4 using the start address board 3003P):

DIP-SWITCH 1,2

DMX HOLD

OFF= see DIP switch 2
ON = DMX HOLD at data loss

DIP-SWITCH 1

OUTPUT LEVEL AT NON-HOLD

OFF= all outputs set to OFF at data loss
ON = all outputs set to ON at data loss

DIP-SWITCH 3,4

DMX PERSONALITY

Personality 1:	S3=OFF	S4=OFF	4-Ch Mode
Personality 2:	S3=OFF	S4=ON	4-Ch Mode + Master Ch 5)
Personality 3:	S3=ON	S4=OFF	2-Ch Mode (Output 1/2 and 3/4)
Personality 4:	S3=ON	S4=ON	1-Ch Mode (Outputs 1-4)

The DMX Personality can alternatively be configured via DMX RDM.

Output Characteristics

The outputs feature a quasi-logarithmic intensity characteristic which matches the human eye's sensitivity. Thus the 3604PWM-H has a wide control range.

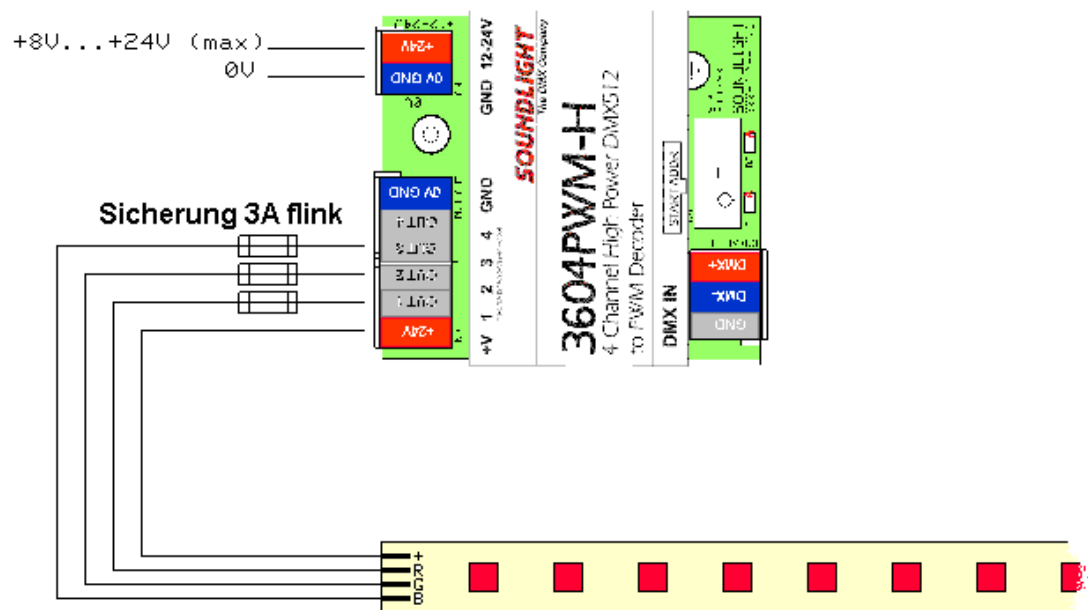
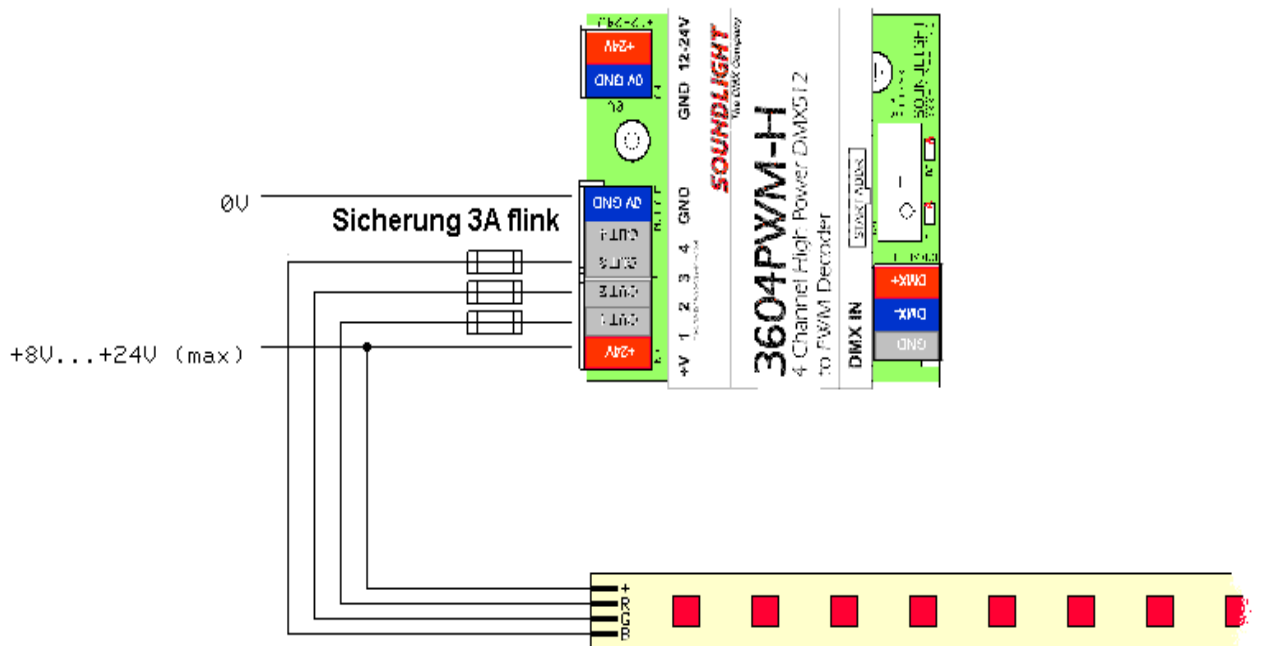
LED Blinkcodes

Green LED	Red LED	Status
always on	off	OK DMX512 Signal received
off	blinking	Error: no DMX signal detected
4x blinking red/green		Settings are being stored in nonvolatile memory

LED CONNECTION

the 3604PWM-H can drive *voltage controlled* LEDs directly. Voltage controlled LEDs can be identified as LEDs, which can be driven from a voltage source, e.g. 12V DC, 24V DC). Examples for such LEDs are TRIDONIC LED-Strips, OSRAM LIENARLIGHT and LINEARLIGHT FLEX. LEDs requiring a *current control* (LUXEON, OSRAM DRAGON etc.) must be fitted with an additional external current limiting device.

Common connection of LEDs (ANODE) is the *positive terminal* (orange) of the output connector. When powering from the LED side, extra power supply of the 3604PWM-H is not required. Alternatively, the 3604PWM-H could be powered and LED power derived from the decoder. Then, of course, the total supply current must be provided from the decoder supply. (orange [+] and blue [-] terminals are internally connected in parallel).

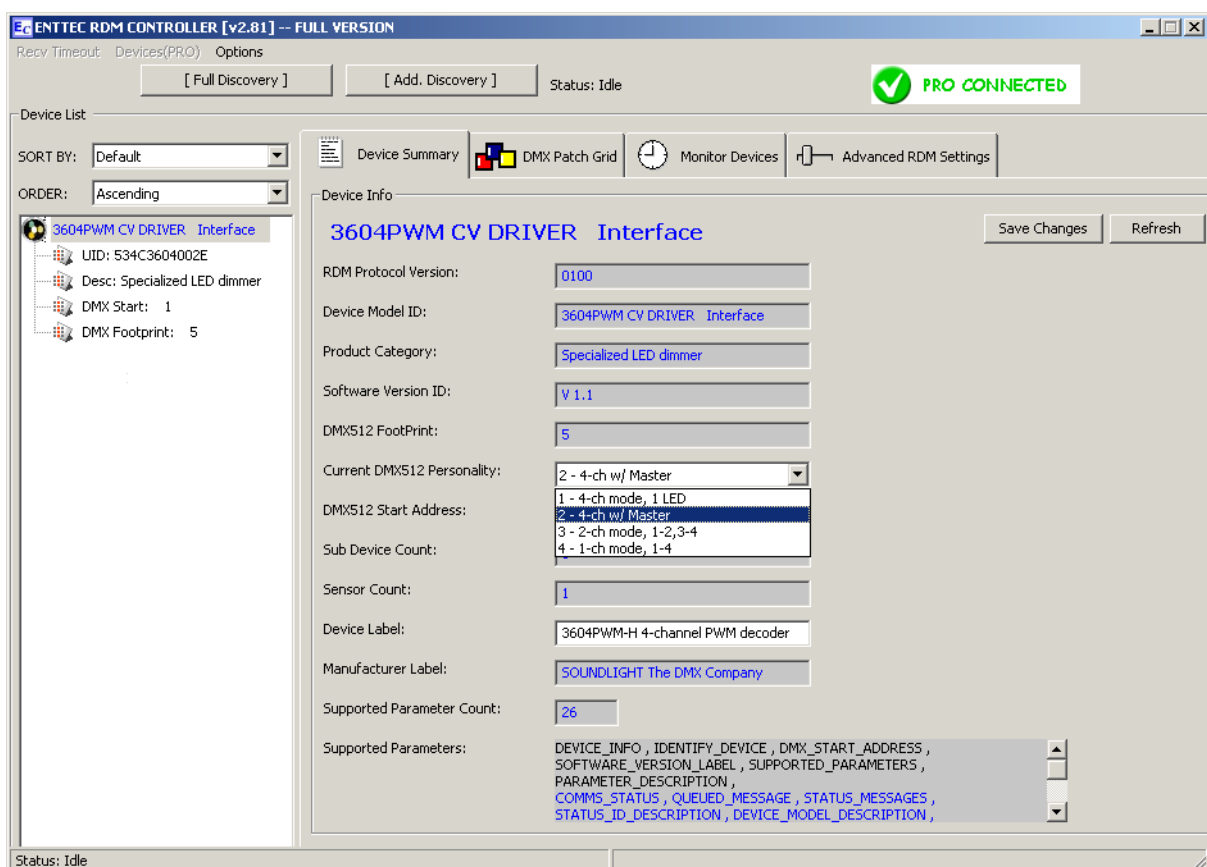


LED-Array Common Anode
e.g. OSRAM LINEARLIGHT RGB FLEX

Dimensions:	68mm (B) x 93mm (T) x 66mm (H)
Power supply:	12-24V DC
DMX IN:	1 Unit Load
DMX OUT:	durchgeschleift
DMX data slots:	1/2/4 (5)
PWM Out:	8-24V Impulssignal 0%-100% (Pegel je nach Versorgungsspannung)
PWM resolution:	12Bit
PWM characteristic:	quasi-logarithmic
max. output current:	3 A per output (ext. fuses 3A fast blow required for output protection)
Output frequency:	ca. 490 Hz
Schutzart:	IP20 - nur für trockene Räume
Operating temperature:	0-50 C
Order Code.:	3604PWM-H



The decoder accepts DMX RDM (see ANSI E1-20:2006 V1.0). Using RDM, you may change the DMX start address, the DMX personality and several parameters.

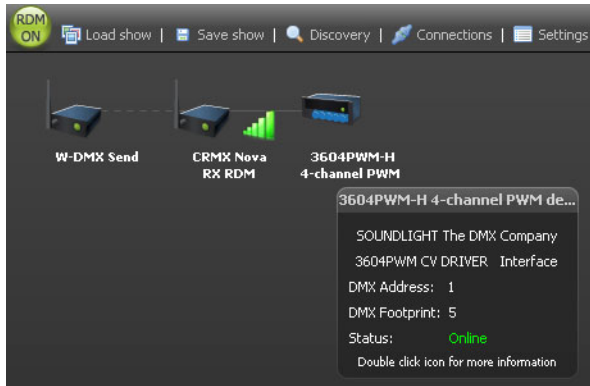


Start address setting using DMX RDM::

Please note that mechanical start address switches get locked as soon as settings have been changed using DMX RDM. This prevents the decoder from reading start address switch data again. To unlock the switches, set the hundreds position to "9" temporarily. This will unlock the switches, and re-enable address and DIP-switch settings.

Additional RDM functions allow to:

- read the DMX slot labels
- read and modify the device label
- identify the decoder
- set output frequency and output behaviour
- read device hours and device initializations
- read, activate or deactivate the DMX HOLD mode
- monitor DC supply voltage
(automatic status messages are generated when leaving the allowed voltage range)



3604B-H detected by DMX RDM software
"SuperNova" (Lumen Radio)

DISTURBANCES

If a trouble-free operation cannot be guaranteed, disconnect the decoder interface and secure it against unwanted operation. This is especially necessary, when

- the unit has visible damages;
- the unit does not operate;
- internal parts are loose;
- connection cables show visible damages.

CE MARKING



The unit has been tested in our lab and has been marked to comply with CE requirements. To ensure compliance, use grounded power leads only and make sure that properly shielded data lines (CAT5, DMX data cable or Digital Audio cable to AES/EBU specifications) are used. Any modifications not approved by the manufacturer may void CE compliance.

LIMITED WARRANTY

This instrument is warranted against defects in materials and workmanship for a period of 12 months, beginning with the date of purchase. The warranty is limited to repair or exchange of the hardware product; no further liability is assumed. SOUNDLIGHT is not responsible for damages or for loss of data, sales or profit which arise from usage or breakdown of the hardware product. In Germany, SOUNDLIGHT will repair or replace established defects in hardware, provided that the defective part is sent in, freight paid, through the responsible dealer along with warranty card and/or sales receipt prior to expiration of warranty.

Warranty is void:

- when modifying or trying to repair the unit without authorisation;
- modification of the circuitry;
- damages by interference of other persons;
- operation which is not in accordance with the manual;
- connection to wrong voltage or current;
- misuse.

SERVICE

There are no parts within the DMX decoder 3604PWM-EP which require the user's attention. Should your unit require servicing, please send it to the factory, freight paid.

END OF LIFETIME



When the useful lifetime of this product has been reached, it must be disposed of properly. Electronic devices must not be placed in domestic waste. Consult your local authorities to find the nearest collection point of used electric and electronic devices. SOUNDLIGHT is a WEEE registered company (Reg No. DE58883929).

Additional Information

For more information on DMX RDM and individual RDM functions, pls refer to our website:

www.rdm.soundlight.de