

Installation of the SOUNDLIGHT PCI DMX Interface card 1514PCI, 2514PCI



This installation guide refers to the PCI DMX512 interface cards 1514PCI (dual link, 1024 channels) and 2514PCI (quad link, 2048 channels).

The installation can be performed on Windows 98, Windows 2000 or Windows XP.

Installation under Windows 95 is not supported; we suggest you upgrade to another system.

INSTALLATION UNDER WINDOWS 98

Disconnect your computer from the mains supply, open the housing and locate a free PCI slot (short slots, usually white or grey).

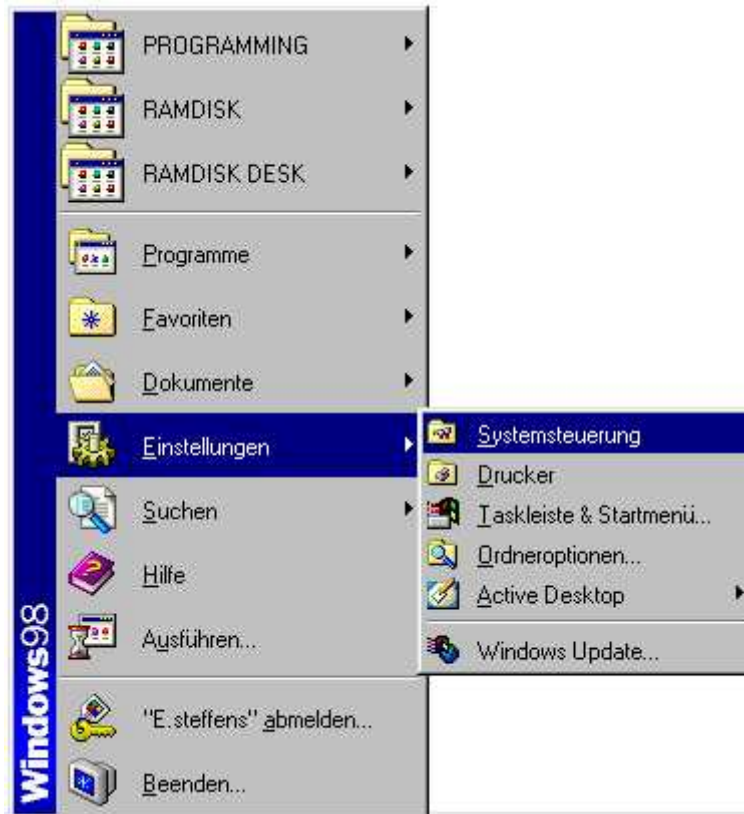
Be careful while inserting slot cards. Static electricity may damage your equipment. Always store interface cards in antistatic bags, and discharge yourself against the PC housing before plugging or unplugging interface cards.

Gently insert the card, and make sure it is inserted correctly. Fasten the card using the previously removed cover slot screw, then close the PC housing.

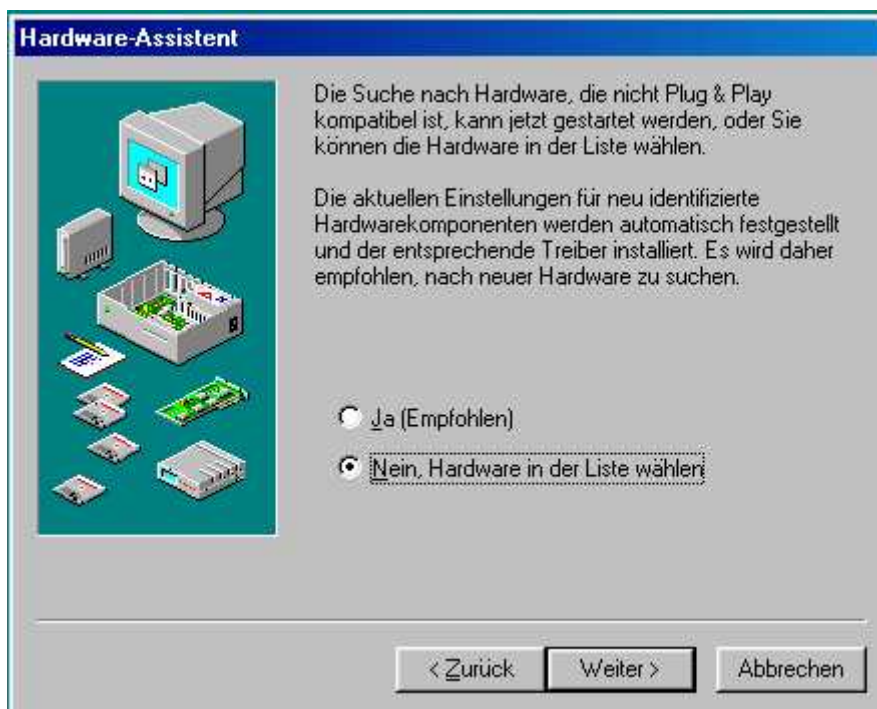
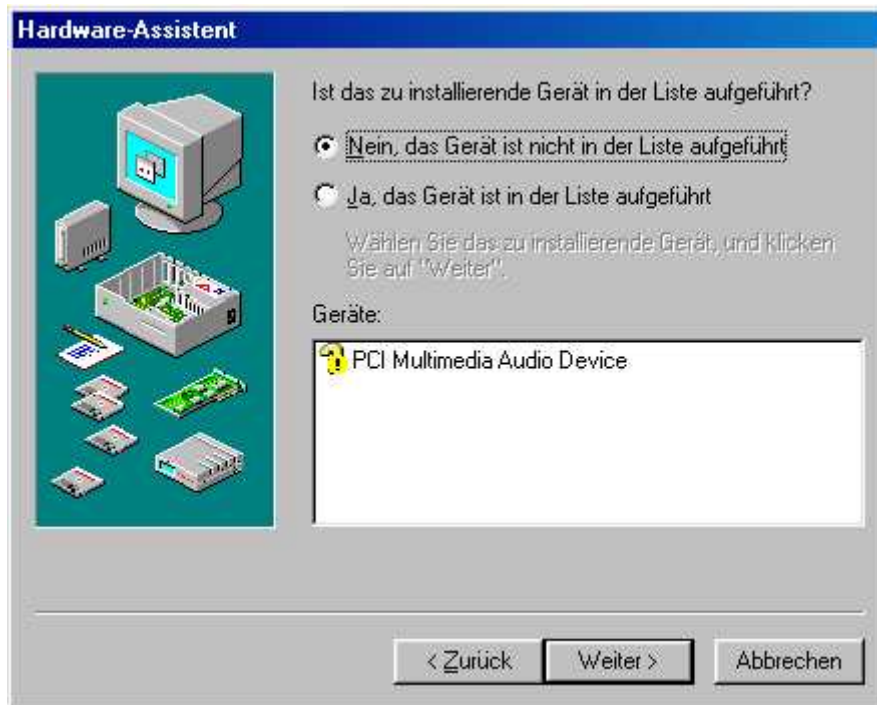
Upon the next start of Windows, a new multimedia device will be detected. The installation will be performed automatically. Insert the driver disk into drive A: and follow the on-screen instructions.

Alternatively, you may install the card manually. To do so,...

..select SETTINGS - SYSTEM CONTROL and click the ADD HARDWARE icon.



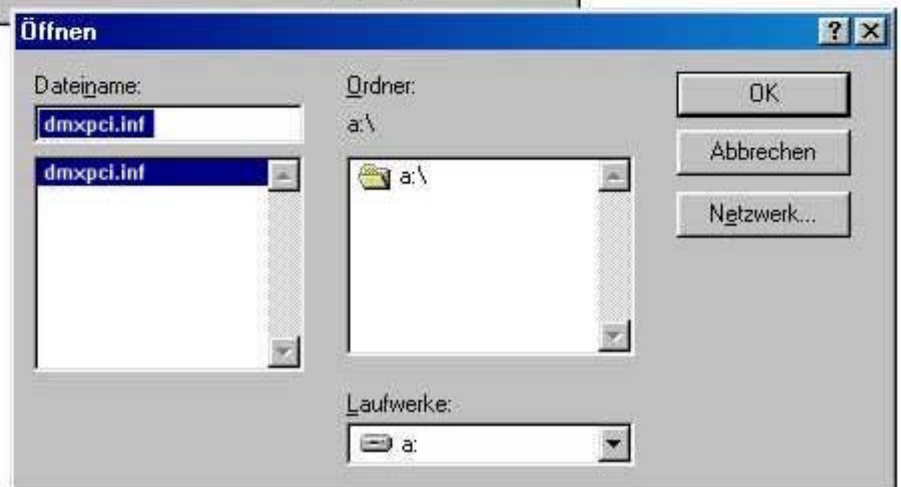
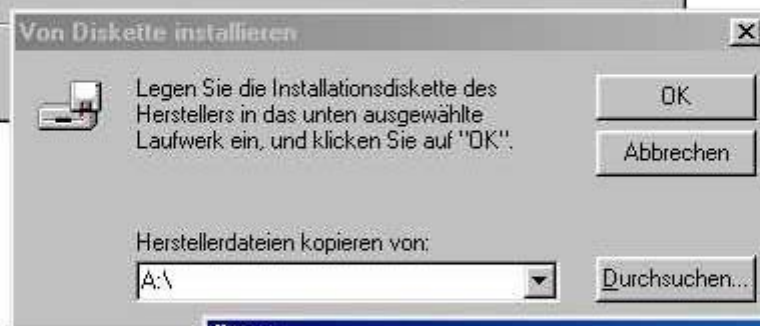
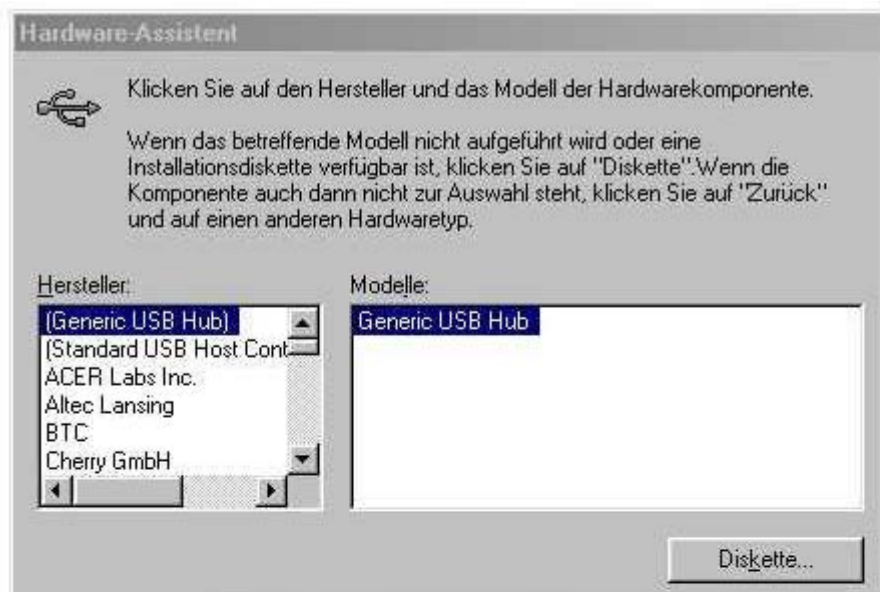
We do not need automatic detection, since the new device is well known.
Thus select NO, THE DEVICE IS NOT IN THE LIST.



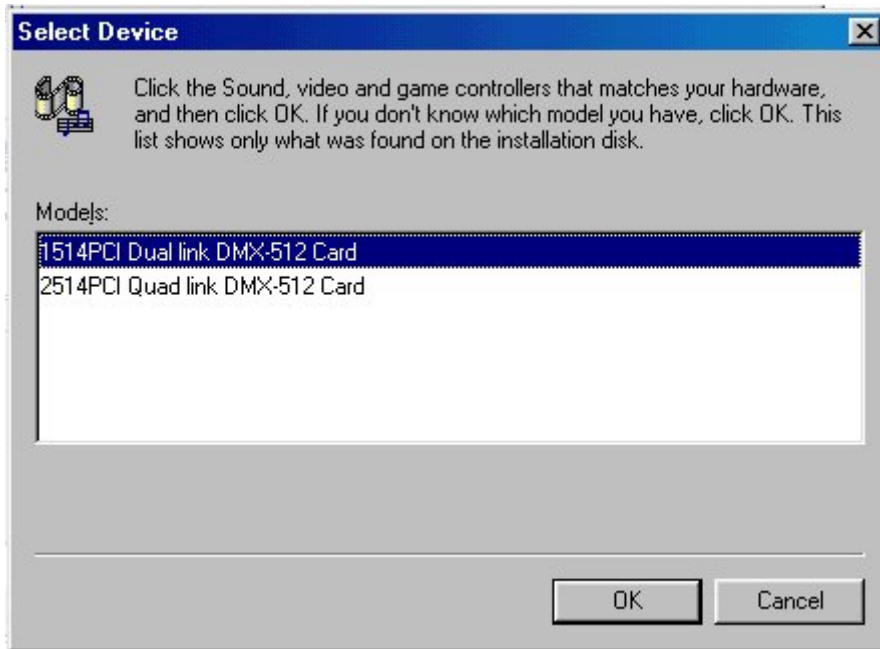
From the list, select SOUND, VIDEO AND GAME CONTROLLER.



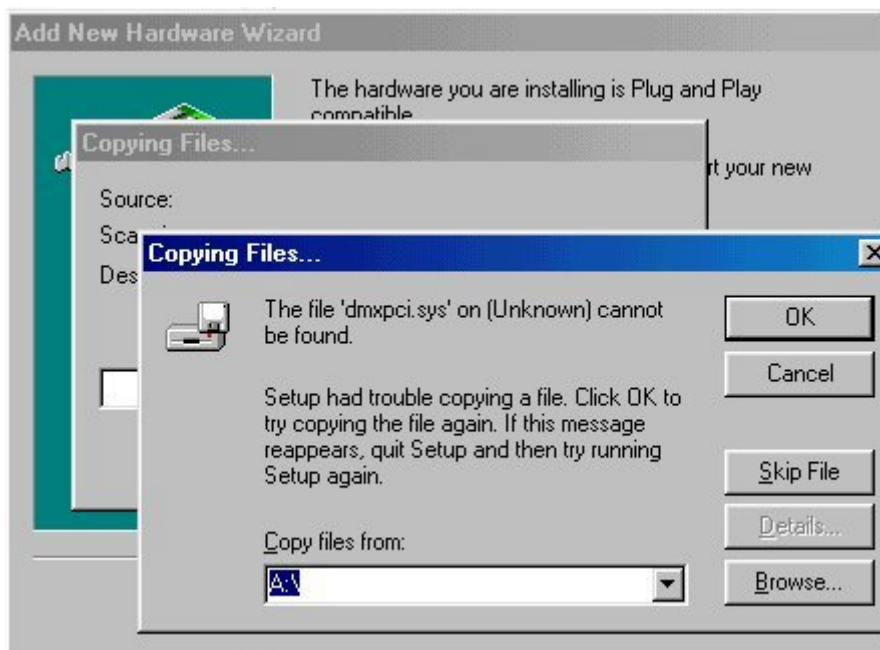
As the SOUNDLIGHT PCI DMX interface cards are contained within this list, select HAVE DISK and then BROWSE.



Select the device you have and click OK..



If the system prompts to load the system driver, simply click OK again..





That completes the installation of the SOUNDLIGHT PCI DMX interface card. You may now load your application software and access the interface.

INSTALLATION UNDER WINDOWS XP

Disconnect your computer from the mains supply, open the housing and locate a free PCI slot (short slots, usually white or grey). Gently insert the card, and make sure it is inserted correctly. Fasten the card using the previously removed cover slot screw, then close the PC housing.

Upon the next start of Windows, a new multimedia device will be detected. The installation will be performed automatically.

At boot time, Windows XP reports that new hardware has been detected.

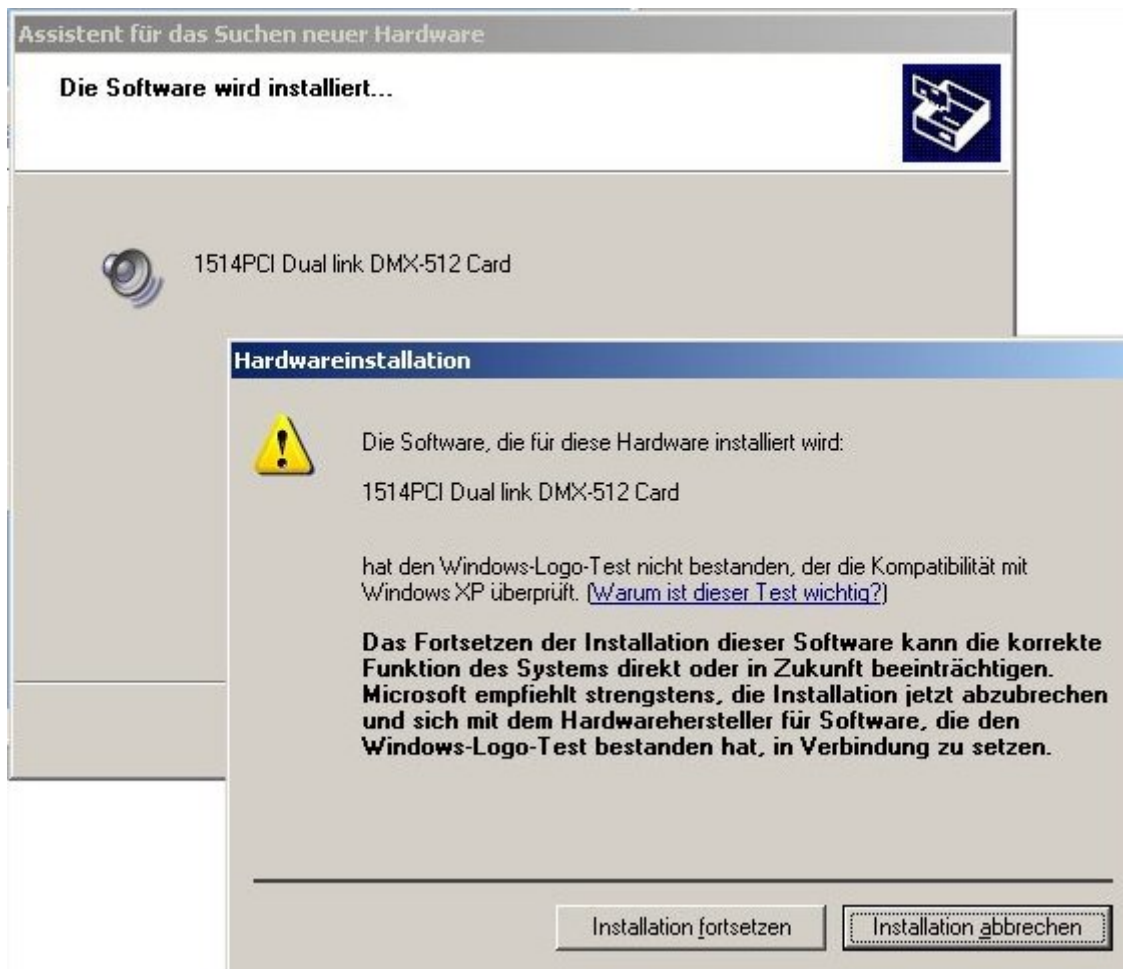


Insert the driver disk into drive A:. Only then click CONTINUE.



The automatic detection will identify the card and install it as new multimedia controller.





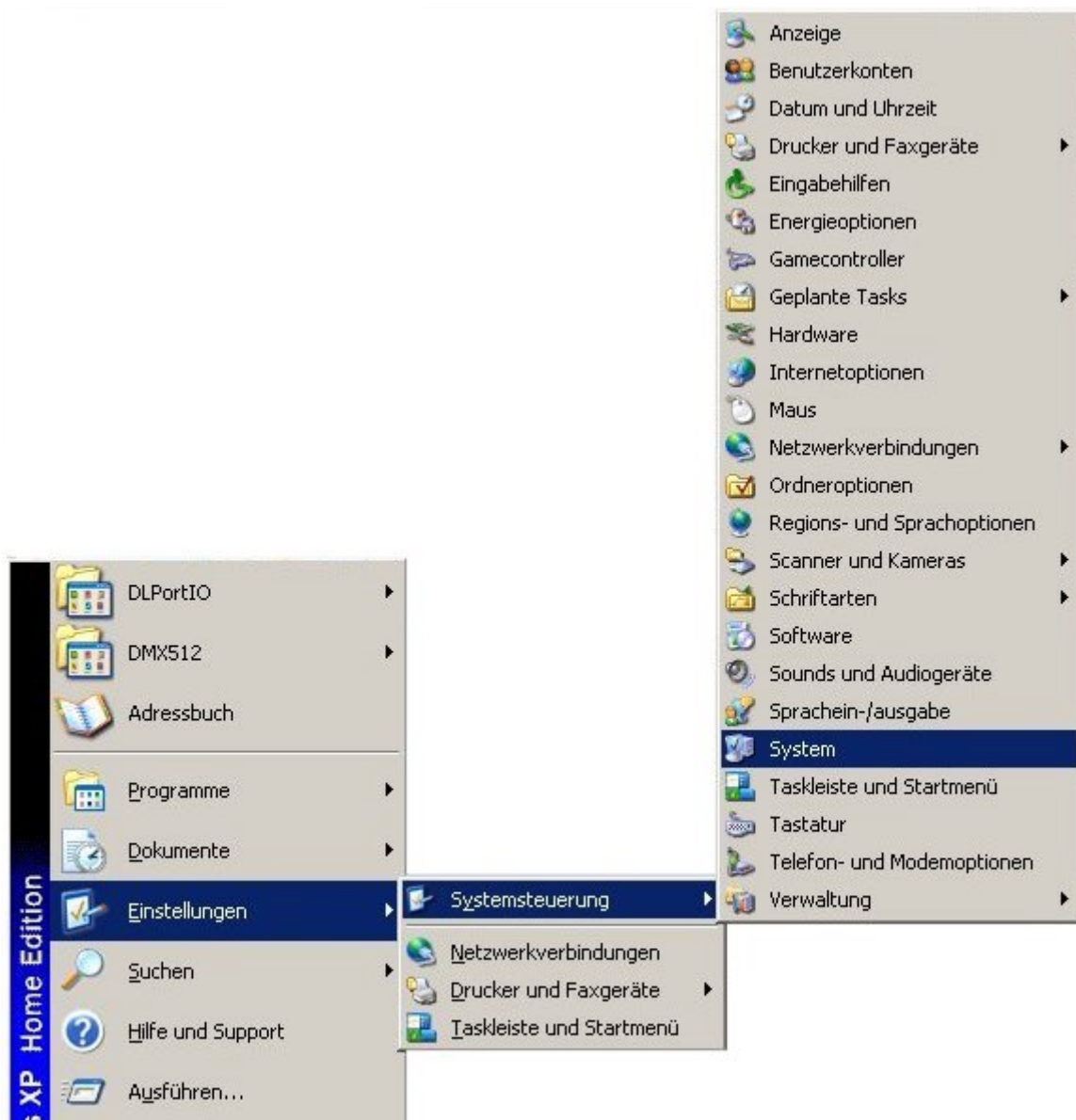
All drivers are checked for a special Microsoft certificate. As this certificate has not yet been issued, click CONTINUE INSTALLATION to install the driver nevertheless.



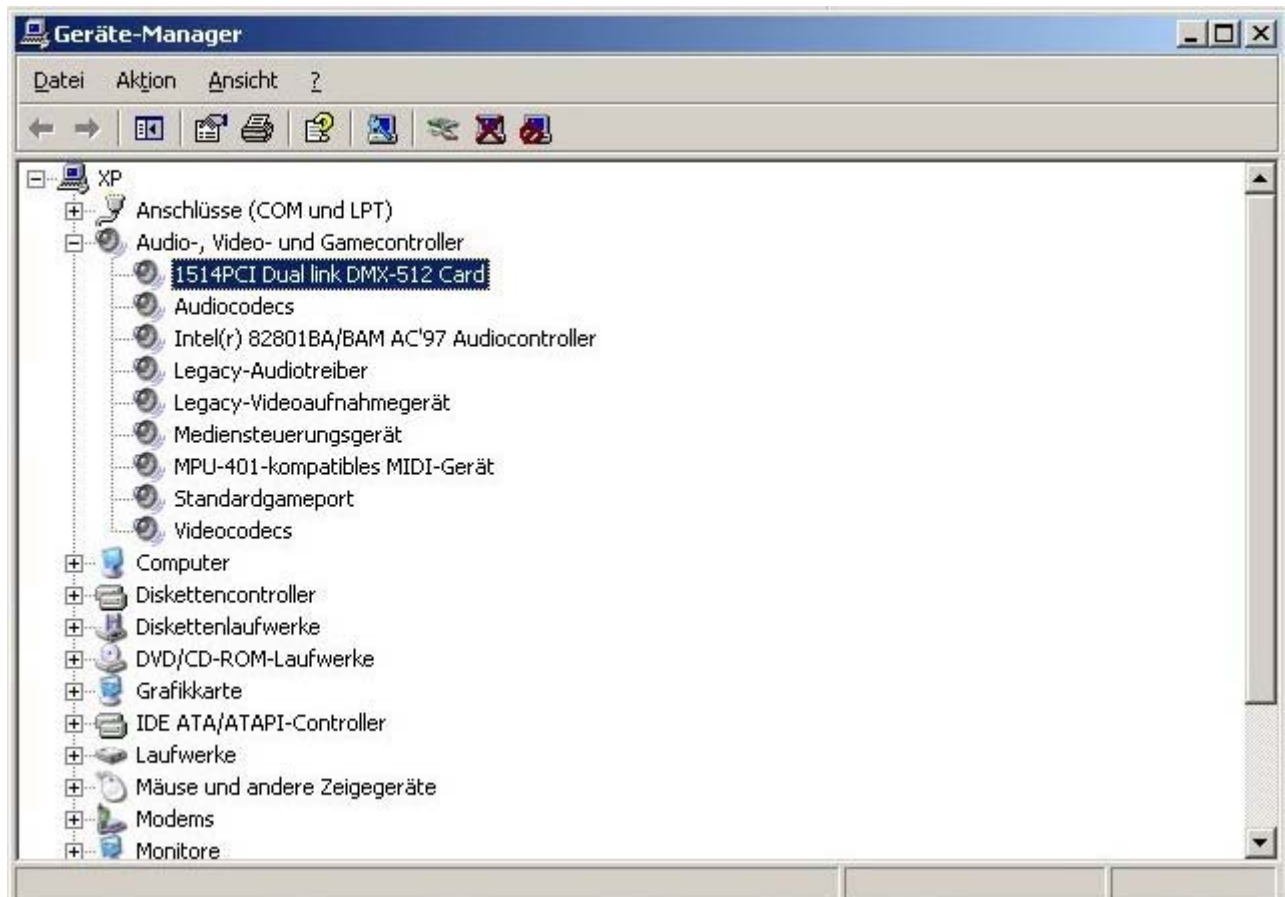
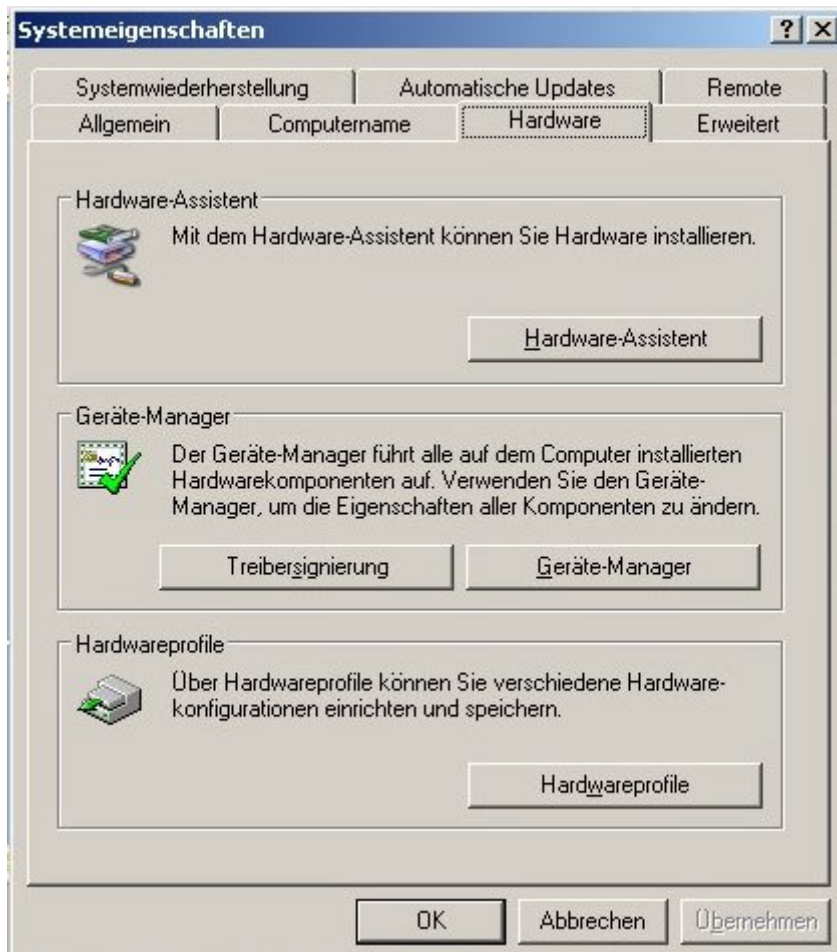
Windows XP will do so and register the DMX interface card. The speaker symbol does just represent any type of multimedia card.



This completes the installation. If you need to review the installation details, click **SETTINGS - SYSTEM CONTROL - SYSTEM**.



Select the **HARDWARE** tab, then click the **DEVICE MANAGER** button.



A double click will unveil the device properties. We recommend to keep all "automatic" settings in order to enable true Plug-and-Play compatibility of the PCI DMX512 interface card.



Use the supplied WIZARD.EXE diagnostic tool to verify correct installation of card and driver.

All driver files are also contained on the accompanying CD.

More information, demo software and application programs can be found on the accompanying CD, or check our support website at <http://www.pcdmx.de>, or <http://www.pcdmx.com>